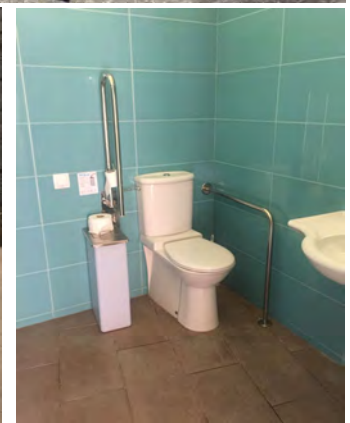


CALA MAJOR ROUTE

CASTILLO DE BELLVER



PRACTICAL INFORMATION

Carrer de Camilo José Cela, s/n - 07014 Palma
Information and customer service office inside the castle. First floor.

Phone: 971 735 065, fax. 971 45 43 73
Website: castelldebellver.palma.cat
E-mail: castelldebellver@palma.es
Ticket office: 971 225 900 extension 3935

Opening hours

APRIL TO SEPTEMBER:

Monday: CLOSED - Tuesday to Saturday: 10.00 to 19.00 - Sundays and holidays: 10.00 to 15.00

OCTOBER TO MARCH:

Monday: CLOSED - Tuesday to Saturday: 10.00 to 18.00 - Sundays and holidays: 10.00 to 15.00



GENERAL INFORMATION

The construction of the castle began in 1300 by order of Jaume II, King of Mallorca. The work on the castle took nine years and the decoration work was completed later. Seventy permanent employees, a large number of women and the king's slaves worked on the construction site. The castle was designed as a royal residence. The three kings of Mallorca resided there for a short time: Jaume II, Sancho I and Jaume III. At the end of the 14th century, Juan I of Aragon and Violante de Bar lived there for a while with their court, fleeing from the plague that devastated Barcelona.

The ground plan of the building is circular, with three semicircular towers attached and another tower seven metres from the castle body. The building, which is arranged around a central courtyard, has two levels: the ground floor with semicircular arches and flat roofs and the upper floor with pointed arches and covered by a ribbed vault in the purest Gothic style.

PHYSICAL ACCESSIBILITY

There is a tourist bus stop with a sign at the door (special entrance for people with disabilities), but not at the main entrance.

- Ticket office next to the parking lot:

At the counter there is a room adapted for wheelchair users, 80 cm high, 73 cm deep and 60 cm deep.

Ramp 2.02 m wide, length 9.16 m, simple handrail 70 cm high and inclination 4, and lower plinth 10 cm on the side with inclination.

- From the ticket office to the access to the castle:

- Pavement with 2.37 m wide cobblestones, reduced to 1.70 m in some areas, with flattened pavements with a guidance system for the blind (some areas are asphalted).

- Next to the stairs for access to the castle, a SIA sign indicates the direction to follow for the accessible path.

- The first section is paved with asphalt, followed by a pedestrian walkway and a pavement with a guidance system for the blind; the second section is paved with cobblestones; the next is a pedestrian walkway without a lowered pavement or guidance system (guidance system for the blind) and the third section is paved at the side of the road, 130 cm wide

- Arrival at the ramp with wooden floor, with sections for resting

every 9 m and 1.20 m long; they are unmarked, the width of the ramp is variable from 1.34 m to 0.87 m, double railings at heights of 1 m and 73 cm. With railing at the beginning of the ramp with gaps of 1,5 cm

- Access to the castle: 2.12 m long door

Exterior of the castle:

- Stone slabs which, due to damage, can hinder wheelchair access in some sections.

- Hall \geq 2.35 m wide

- Some sections with a slight inclination.

Interior area of the castle

- Paved floor, which generally does not obstruct wheelchair driving

- The corridor is 2.26 m wide.

- Inclined access area to the yard 2.30 m wide, 2.16 m long and 7.5% slope.

- Width of the courtyard for turning \geq 2,63 m



Museu d'Història de la Ciutat (Museum of the City's History):

- Access: Door 1,48 m
- Ramp width 1.15 m, two sections with a length of 2.19 m and 4.48 m and a gradient of 7.5%.
Double railing with a height of 1 m and 68 cm with a lower base of 8 cm.
- Inside: Pavement that could make it difficult to drive a wheelchair, and wooden pavement.
Passageways of ≥ 85 cm and width of the exhibition rooms ≥ 2 m
Lift: width 80 cm, depth 1.20 m
All exhibition rooms on the first floor have a 10 cm high step at the entrance and doors with a free passage of 87 cm (80 cm for the information room).
Wheelchair-accessible toilet with SIA signage with access via a moderate slope.
The door is a sliding door of 79 cm.
The toilet measures 177 cm x 188 cm.
Wheelchair users can turn at a diameter of \varnothing 1.45 m.
Lateral approach area of 1 m.
The room is equipped with an alarm button.
Height of the washbasin 85 cm
Lower approach area 73 cm high and 35 cm deep

ACCESSIBILITY FOR VISUALLY IMPAIRED VISITORS

We recommend that you visit the castle with a guide, as we can see changes in the interior of the plains and slopes without any signs - steps, ramps or cordoned off areas. There is a relief plan of the two floors of the castle, located to the right of the main entrance. There is no information material in Braille. There are audio guides in different languages and a free mobile audio guide app. The access to the toilet is indicated in Braille.

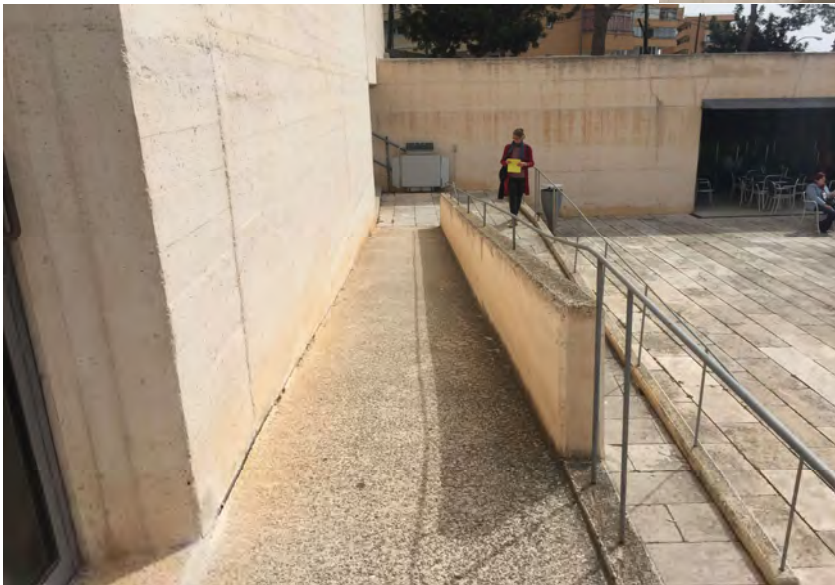
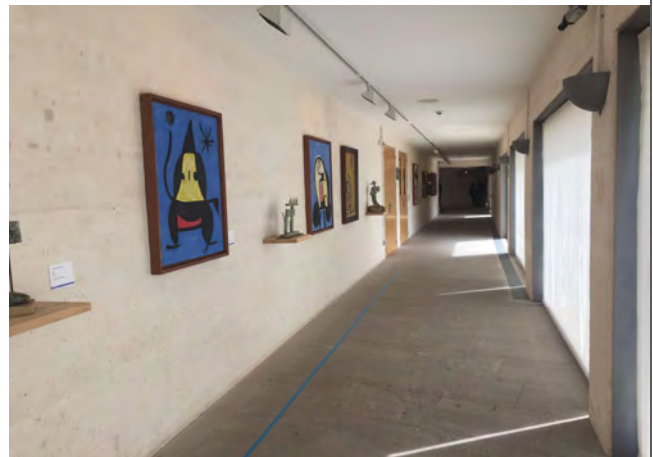
ACCESSIBILITY FOR VISITORS WITH HEARING DISABILITIES

Visiting the castle is very intuitive and the museum offers written information. The site has information signs that allow visitors to move around the interior and identify areas of interest. The complex has a magnetic loop on the first floor. Both at the cashier's desk and in the castle shop, the staff does not speak sign language nor have they received any specific training. There are no guided tours in sign language.

Passion for
Palma
de Mallorca

Ajuntament de Palma

FUNDACIÓ PILAR Y JOAN MIRÓ



GENERAL INFORMATION

The Miró Mallorca Fundació is a cultural institution in Mallorca, based on the workshops and studios that the artist has given to the public. The foundation enables people to discover the art of Joan Miró and to study the creative process in the place where Miró lived and worked for almost 30 years.

The Miró Mallorca Fundació has three unique buildings that constitute one of the most valuable architectural ensembles in Mallorca. The Atelier Sert, designed by architect Josep Lluís Sert, a friend of his, and built in 1956; Son Boter, a late 18th century Mallorcan house that the artist used as his second painting and sculpture studio; and the Moneo building, the headquarters of the Fundació, designed by Rafael Moneo and inaugurated in 1992. The first two buildings have been declared Cultural Heritage of Cultural Interest (BIC).

PRACTICAL INFORMATION

Saridakis, 29
 07015 Palma
 Phone: 971 701 420
 E-mail: info@miromallorca.com
 Website: miromallorca.com

Opening hours

Winter (16-09 / 15-05)

Tuesday, Wednesday, Thursday, Friday and Saturday from 10 to 18 o'clock

Sunday and holidays from 10 to 15 o'clock

Monday closed

Summer (16-05 / 15-09)

Tuesday, Wednesday, Thursday, Friday and Saturday from 10.00 to 19.00

Sunday and holidays from 10 to 15 o'clock

Monday closed

PHYSICAL ACCESSIBILITY

Outdoors

Access from the outside through a sloping surface 1.45 m wide, 61 cm long and 10% inclination.

Cobblestone slabs that do not hinder wheelchair access with uneven tree barrels.

Some grids with holes of 3 cm.

Access road with a steep gradient.

In front of the entrance there is a zebra crossing with a warning light for the cars.

In front of the main entrance there is an adapted place reserved.

Inside

Stop of the tourist bus in front of the door without sign

- Inside access doors with 2 leaves of 85 cm each.

- 1.08 m counter without space adapted for wheelchair users.

- floor coverings inside and outside.

- Inside wheelchair access: Driveway width $\geq 1,90$ m.

- There are some protruding elements at a height of less than 2 m without indications

- internal ramps with excessive gradient, which reaches 20%.

Exit ramp from the ground floor to the cafeteria with a 1.10 m wide door that does not have a 1.50 m wide landing that is not affected by the door leaf. Ramp length, 2 sections of 9.90 m and 8 m, width 1.08 m and 1.38 m and slope 8%. Handrail height 78 cm. First section (platform) with 2 cm lower plinth, second section with 10 cm lower plinth.

- Gardens: Accessible for wheelchair users through an elevated corridor with wooden planks (1.16 m wide), with ramps of about 6% inclination, inclined sections with a maximum length of 6 m. Unevenness of 10-15 cm between the wooden platform and the gravel areas. No platform and the entire route can be driven along the specified ramps.

- Cafeteria: Access via stone pavement, concrete interior at the same level.



- Access to the Sert workshop: 1.13 m wide door with a 4 cm step.
- Driving inside: Width 1.13 m reduced to 73 cm in some places
- Son Boter: Access can be made by vehicle to the main door, access step 4 cm high.

Elevator

Width 1.08 m, depth 1.39 m Door of 80 cm. Pushbutton panels at 1.10 m height. With railing, height 93 cm. Without SIA signs, without signage when entering.
 The installation has internal and external lifts to overcome the different levels. Width 71-82 cm, length 81-94 cm.

Toilet reserved for wheelchair users with SIA signs.

The 75 cm wide door opens to the outside.
 It is not possible to turn Ø 1.50 m . as the internal dimensions are 143 cm x 265 cm.
 Lateral access space of 76 cm.
 The toilet is equipped with an alarm button.
 Height of the washbasin: 80 cm.
 Lower access area of 65 cm high and 26 cm deep.
 Note: The toilet is located on the 1st basement level. Access is via a corridor with a width of ≥1,38 m or via the elevator.

ACCESSIBILITY FOR VISUALLY IMPAIRED VISITORS

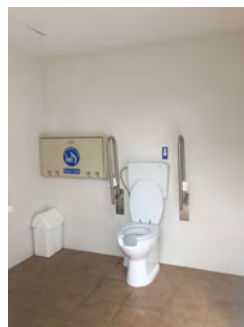
The interior floor is mainly smooth and homogeneous and has no gaps; a visit with an accompanying person is recommended, as some areas/works are delimited by easily recognisable railings, while others are not, and there is no guidance system (guidance for the blind) to indicate the direction of the visit. Furthermore, given the temporary nature of some exhibitions, we may find cantilevered elements that are not visible with a cane. There is no information in Braille.

Outside, the ground changes its texture from gravel to stone; the garden areas are mostly fenced and/or levelled; they have no tree holes and/or tree barrels that could hinder movement.
 It is advisable to visit the site with an accompanying person.

ACCESSIBILITY FOR VISITORS WITH HEARING IMPAIRMENT

The facility does not have information material in sign language, but most of the works and/or rooms have posters in different languages. There are no sign language tours or audio guide signs. Part of the site houses temporary and/or travelling exhibitions. Subtitles of videos printed in several languages.

JARDINES DE MARIVENT



PRACTICAL INFORMATION

Avenida Joan Miró, 229
Palma de Mallorca

Opening hours:

1 May - 30 September: from 09.00 to 20.00

October 1 - April 30:
from 09.00 to 16.30

Closed at Easter and from 15 July to 15 September

Free access

GENERAL INFORMATION

The Marivent Gardens are located on the grounds of the palace of the same name and cover an area of 9,155 square metres. The Miró family has donated 12 bronze sculptures, which are permanently exhibited in the gardens.

These gardens are the work of engineer and collector Joan de Saridakis, who built them in 1925. From 1965 to 1972 it was the garden of the Saridakis Museum and since 1965 it has been the official residence of the Royal Family.

PHYSICAL ACCESSIBILITY

ACCESS FROM THE STREET

Avenida Joan Miró: Street with sidewalks wider than 2 metres and with uneven and unimpressed trees. In the areas of the tree trunks the width is 1.95 m. Pavement of square concrete tiles and pedestrian crossings with lowered pavements without signs.

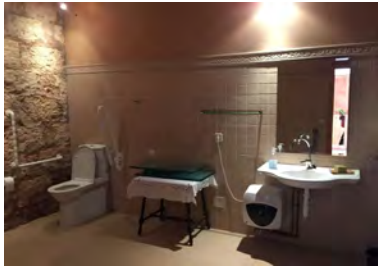
ACCESS TO THE GARDENS

Access is via a small ramp 50 cm long and 1 m wide with a gradient of 10%. Irregular pavement that does not hinder wheelchair access. Large double door with a free passage of 3 m.

INSIDE

The ground consists of loose gravel, which does not hinder wheelchair driving. The width of the paths is about 3.55 m, except in the wooded zone, which is 2.50 m. The whole site is slightly inclined, although some paths have a noticeable gradient. There are several benches, with seat dimensions of 43 cm and a depth of 43 cm with backrest.

CASTILLO DE SAN CARLOS



PRACTICAL INFORMATION

Carretera del Dique Oeste, s/n
07015 - Porto Pi (Palma de Mallorca)
Phone: 971402145
email: museomilitarsancarlos@et.mde.es
Web: www.castillomuseosancarlos.com

Opening hours:
Tuesdays – Sundays: from 10:00 to 14:00
Holydays and Mondays: closed

GENERAL INFORMATION

The Bay of Palma has been an important anchorage for merchant ships seeking protection from the scourge of pirates in the Mediterranean since ancient times. In the bay of Porto Pi the first castle was built on a watchtower. The project for the square bastion tower was commissioned by King Philip III in 1610 and soon became known as "San Carlos" in honour of Viceroy Carlos Coloma. Fifty years later, the castle was enlarged by adding a ring with four other large bastions, giving it the peculiar shape of an irregular polygon with a star-shaped appearance. On the coastline a fortress was built for a battery that crossed the fires with that of Illetes.

In 1890, the fortress underwent various remodelling to create a cannons battery. The fortress was an artillery barracks and a military prison until 1980, and from then on, its use was limited to firing salvos, from which both national and foreign warships were welcomed.

In 1981 it began its restoration to turn it into a museum to house the objects from the recently closed artillery park. With additional funds from the Army Museum, units from the Balearic Islands Military Zone and private donations, the Museum of the Castle of San Carlos was finally inaugurated on 26th September 1991. In 1994, with the help of several public and private entities, including the Association of Friends of the Castle of San Carlos, the museum was equipped with two new rooms and the entrance and lighting of the building were improved.

ACCESIBILITY

The visit is recommended with an accompanying person.



- Access from the parking:

Presence of a 4 cm step. Irregular paved entrance.

Access door 325 cm wide, with an inclination of 738 cm long and 37 cm high.

Information Office with a 23 cm step.

Irregular and sloping floor. As some of the halls are not accessible, the entire courtyard has a circumferential walkway of cm width.

Hall 6: two ramps, 115 cm wide, 100 cm long and 10 cm high for the first and 100 cm long and 11 cm high for the second. Free passage of 178 cm with a step of 7 cm, with smooth stoneware floor.

Administration Office: two ramps of 115 cm width, 100 cm length and 19 cm height the first and 11 cm height the second. Free passage of 138 cm.

Toilet in the administration office, but without SIA signage. Lack of light. Free passage of 87 cm, a circle of more than 150 cm. Washbasin 81 cm high and toilet 46 cm high Some protruding objects.

Hall 1: two movable wooden ramps 13 cm and 11 cm high and 110 cm wide. Steps of 182 cm, smooth earthenware floor.

Hall 2: two ramps of 20 cm and 12 cm high. Access only with an accompanying person, as there is a difference in height and a reduction of the pavement; in front of the ramp the room is 90 cm. Internal pavement of stone cement; inside there is a model that does not allow driving around it because at one point the passage is 50 cm wide.

Hall 3: 20 cm step and three 17 cm steps. The room is inaccessible.

Hall 4: two high ramps 11 and 12, smooth earthenware floor inside. No access to the terraces, no lift.

Access to the cafeteria outside the castle, but inside the complex, via a 65 cm long and 10 cm high ramp. Steps of 90 cm and another of 120 cm because of the narrow walls.

Hall 5: entrance with step and access to the interior with 3 steps of 17 cm. The room has an 11 m. long ramp without railings, 170 cm. wide.

Upper terraces: Access is by a stepped ramp, upper ramps and inaccessible stairs.

VISUAL ACCESSIBILITY

There is no guide. Access with guide dogs is allowed.

AUDITORY ACCESSIBILITY

Information panel at the entrance. No audio guide or sign language.